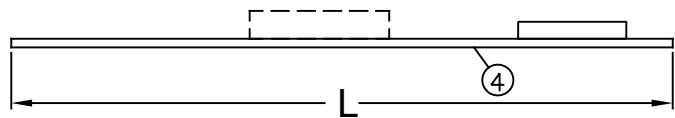
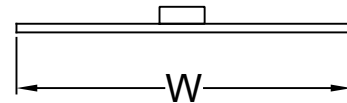


TOP VIEW

- ① Sheet Metal housing
- ② Driver
- ③ Wiring Access
- ④ Prismatic lens
- ⑤ Optional battery pack



SIDE VIEW



END VIEW

NOM. SIZE	WEIGHT (LBS)	DIM 'W'	DIM 'L'
2' x 2'	12	23.62"	23.62"
2' x 4'	15	23.62"	47.62"



## SPECIFICATIONS LED LIGHT FIXTURES

	2'X 4' NOMINAL PART NUMBER	LUMENS	COLOR	2'X 2' NOMINAL PART NUMBER	LUMENS	COLOR
STD	42L-10000	4440	3500K	22L-10000	3600	3500K
	42L-10001	4640	4100K	22L-10001	3680	4100K
	42L-10002	4770	5000K	22L-10002	3710	5000K
	42L-20000	5700	3500K	22L-20000	4460	3500K
	42L-20001	5810	4100K	22L-20001	4550	4100K
	42L-20002	6030	5000K	22L-20002	4640	5000K

Housing construction:

- Extruded aluminum and galvanized steel back panel

Lense

- Clear P12 Prismatic

Voltage

- Universal (120-277VAC)

FOR BATTERY BACKUP FIXTURE ADD -B TO PART NUMBER

SUITABLE FOR CLEANROOM CLASSES ISO 5-8

© 2018 Technical Air Products, LLC  
Unauthorized use is prohibited without express written permission from owner.



Technical Air Products  
Find your clean space.

8069 Belmont Avenue  
Belmont, MI 49306  
616 - 863 - 9115  
800 - 595 - 0020  
Fax 616 - 863 - 9127

848-A